

# Geoprobe®

Advanced site characterisation  
Remediation

## Company Profile

Ejlskov A/S provides professional environmental services in the fields of:

- Building- and construction works
- Soil & Ground water
- Geoprobe investigations
- Property and Companies

Our strength is flexible, innovative and cost-effective solutions tailored to the specific needs and requirements of our customers. In close dialogue with involved projects partners we provide environmental services founded on many years of experiences from complex projects carried out for public and private customers in Scandinavia and Northern Europe. In many cases the projects are implemented in teams with different partners with the aim to provide the optimal to our customers.

Ejlskov is involved in various public or EU financed development projects involving leading universities and environmental authorities - this gives us the basis to maintain a high innovative level using sustainable technical solutions.

To our experienced staff the client is at the centre of our focus and we keep a close and informative dialogue with the client during the project. We do not consider consultancy a standard commodity but a tailored service, providing the client exactly the solution, he is seeking.

## Address

**Ejlskov A/S**  
Voldbjergvej 14, 2  
8240 Risskov  
Denmark  
Tel: +45 8731 0060  
Mail: [info@ejlskov.com](mailto:info@ejlskov.com)  
[www.ejlskov.com](http://www.ejlskov.com)

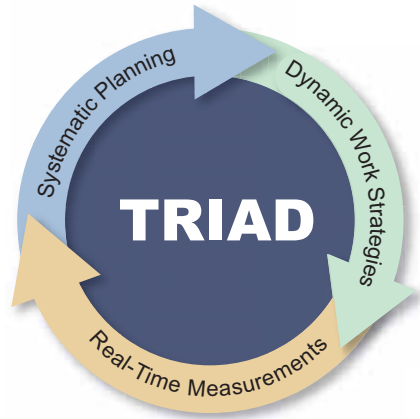


CVR/SE: 24 23 22 98



## Advanced Site Characterization using the Geoprobe® system

Competitive high quality solutions  
Improved data for risk assessment and remedial design



The combination of advantages using the Geoprobe® (www.geoprobe.com) system and the principals of the TRIAD approach (www.triadcentral.org) results in:

- Substantial larger amount of high quality data
- Better conceptual models and understanding of geology and contamination
- Short investigation period and less mobilization
- Improved parameters for risk assessment and decision making
- Lower project life cycle costs
- Achievement of the project objectives.

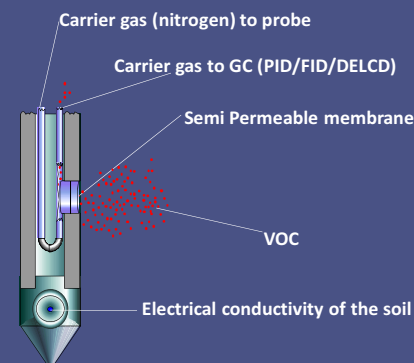
### Site characterization with Geoprobe®

- Dynamic site characterization
- Detailed understanding of source and plume location and behavior
- Targeted sampling and location of monitoring wells
- Improved data for site specific risk assessments
- A well founded baseline study and a consistent conceptual model for design and monitoring of a site remediation
- Narrowing the focus of remediation efforts and assessing performance of current remedial system.

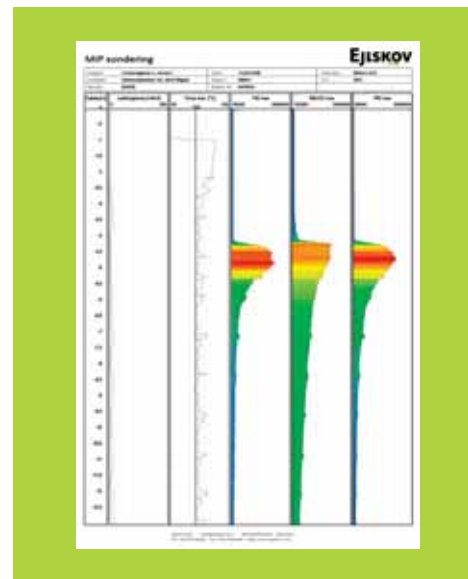
### MIP survey and targeted sampling

The MIP is a direct push tool that produces continuous chemical and physical logs of the unsaturated and saturated zones. It locates VOC's in situ (e.g. chlorinated solvents, hydrocarbons) and shows where they occur relative to the geologic and hydrologic units. Its unique

*The Membrane Interface Probe (MIP) is a down hole tool that heats the soils and ground-water adjacent to the probe to 120 degrees Co.*



capability of providing reliable, real-time information allows you to make better and timely decisions while your team is still in the field. Following the MIP survey makes it possible to do targeted sampling of soil, groundwater and pore gas for certified laboratory analysis.

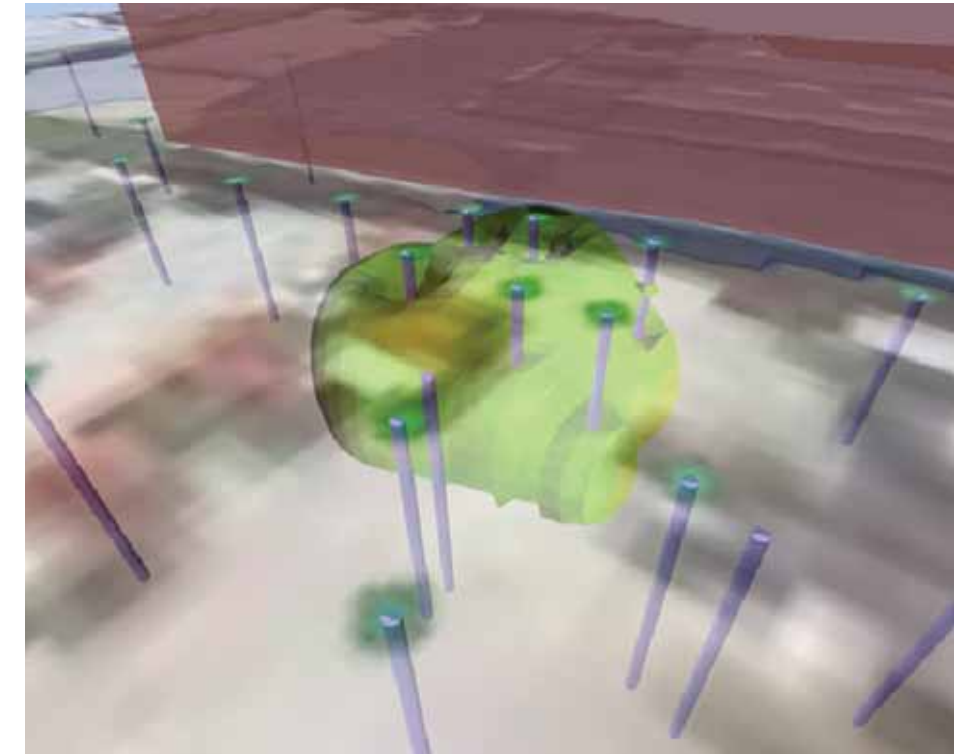


## Remediation with the Geoprobe®

### Ejlskov A/S offers

Remediation expertise, practical experience and comprehensive equipment for:

- Advanced site characterisation according to the principles of the "TRIAD Approach".
- Crucial data information to determine the optimal remediation technique, e.g. bacteria analysis, hydraulic tests, in-situ tests, geochemistry
- Design of full scale remediation projects
- Full scale implementation of injection / remediation projects, drilling, sampling and monitoring
- Documentation reports and consulting services.



### New precision injection system

Direct push top down injection of fluids to achieve in-situ enhanced biodegradation or chemical oxidation of contaminants like chlorinated solvents and hydrocarbons is a progressive and cost-effective technique compared to more traditionally remediation techniques – on top of that it has a minimal carbon foot print.

Ejlskov has its own injection equipment with the option to:

- Inject in specific levels for optimal distribution of the injection fluid.
- Control and monitor pressure and volume of fluid injected at each level.
- Injection pressure up to 150 bar and flow rates up to 20 liter/minute
- Injection of various fluid types, e.g.:
  - EZVI / ZVI
  - 3-D Microemulsion™
  - Newmann Zone™
  - BOS®
  - Melasse
  - ORC® / RegenOX™
  - Permanganate / Peroxides.



**EJLSKOV**

**EJLSKOV**